

“NC "Kazakhstan Temir Zholy“ JSC

**RESULTS OF ACTIVITIES FOR THE 1ST HALF OF 2023
AND THE MAIN TASKS FOR THE SERVICES
OF PROVISION OF ACCESS ROADS
AND THE TRANSMISSION OF ELECTRIC ENERGY**



**Astana
28/07/2023**

CONTENT OF THE REPORT

1. General information
2. On the volumes of provided regulated services
3. On the main financial and economic performance indicators
4. On the article-by-article execution of the approved tariff estimates for the 1st half of 2023
5. On the implementation of the investment program for the 1st half of 2023
6. About the ongoing work with the consumers of regulated services
7. About the prospects of activity

ACCESS ROAD SERVICES

A photograph of a railway track at sunset. The tracks are made of steel rails on concrete sleepers, with gravel ballast between them. Overhead power lines and support structures are visible. A crane is positioned on the left side of the tracks. The sun is low on the horizon, creating a bright glow and long shadows. The sky is a mix of blue and orange.

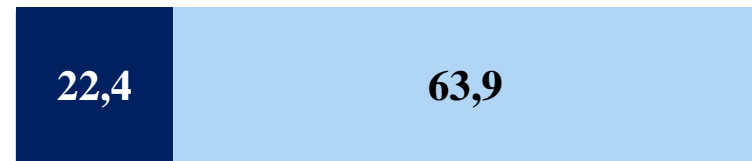
ACCESS ROAD SERVICES

Service-1 - for the passage of rolling stock.

Service-2 - for shunting, loading unloading, as well as for parking of rolling stock, not provided for by technological operations of the transportation process.

For 6 months of 2023, access road services were provided to 360 consumers.

The balance of the branches of the Company has 170 access roads with a total length of 86.3 km



■ on reinforced concrete sleepers, km

■ on wooden sleepers, km

ABOUT EXECUTION OF THE TARIFF ESTIMATE FOR SERVICES OF ACCESS ROADS ACCORDING TO THE RESULTS OF THE 1ST HALF OF 2023 (SERVICE 1)

№	Name of indicators of the tariff estimate	Units of measurement	Approved for 2023	Fact for 6 months	Execution, (%)
I	The costs of producing goods and providing services, total, incl.	thousand tenge	26 021,08	15 209,50	58
1	Material costs, total, incl.	"-"	9 823,77	3 658,21	37
1.1.	materials	"-"	9 823,77	3 658,21	37
2	Labor costs, total, incl.:	"-"	9 683,92	7 064,53	73
2.1.	salary	"-"	8 527,97	5 639,21	66
2.2.	social tax	"-"	1 046,50	1 363,10	130
2.3.	Compulsory social health insurance	"-"	109,45	62,22	57
3	Depreciation of fixed and intangible assets	"-"	6 490,76	4 486,76	69
4	Other costs (medical services)	"-"	22,63		
II	Period expenses, total (taxes)	"-"	2 613,59	1 675,91	64
III	Total costs	"-"	28 634,67	16 885,42	59
IV	Profit	"-"	2 815,06	-8 718,46	-310
Y	Total income	"-"	31 449,73	8 166,96	26
YI	The volume of services provided	wagon-km	198 745	57 180	29
YII	Tariff	tenge/ wagon-km	142,83	142,83	100

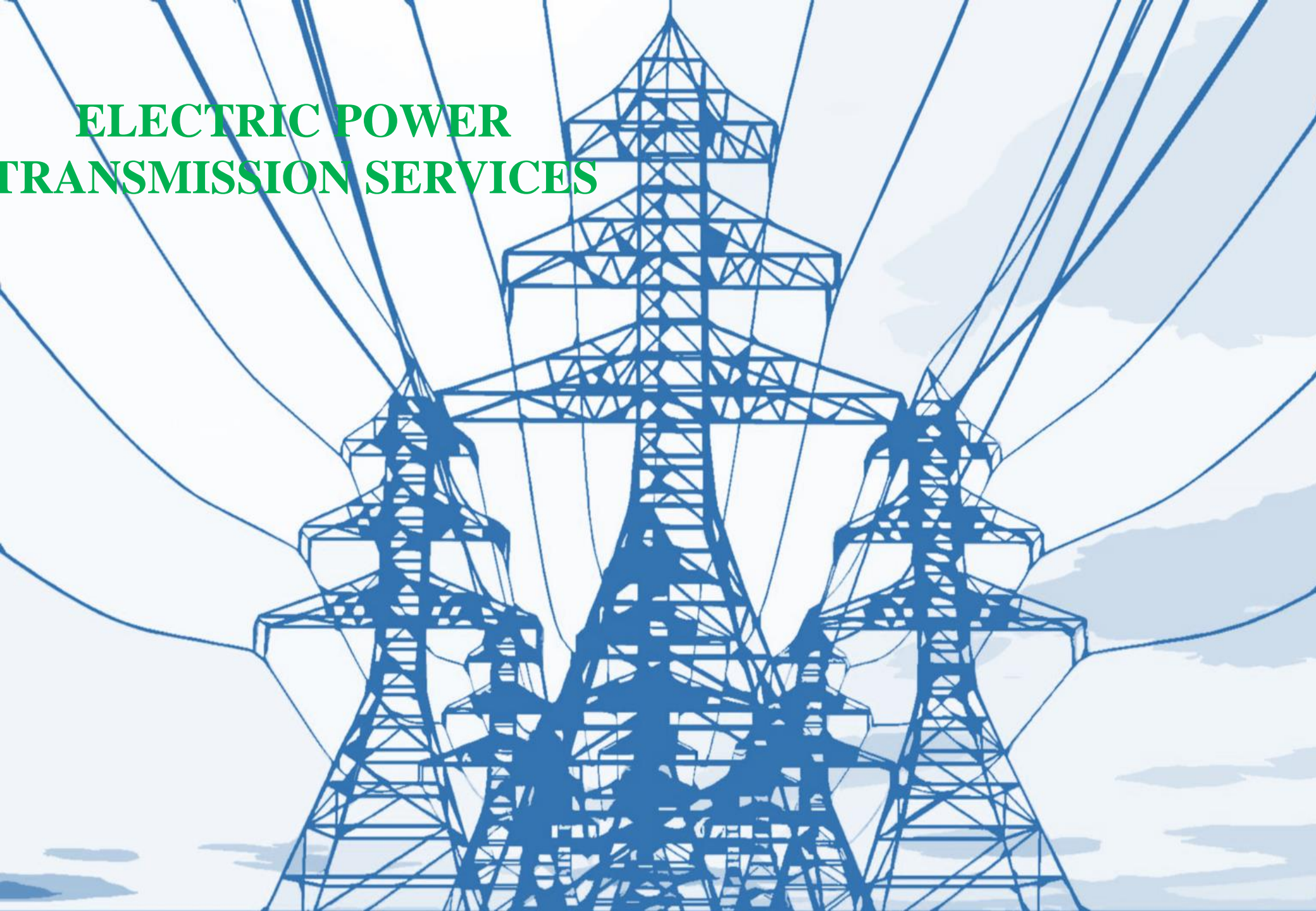
ABOUT EXECUTION OF THE TARIFF ESTIMATE FOR SERVICES OF ACCESS ROADS ACCORDING TO THE RESULTS OF THE 1ST HALF OF 2023 (SERVICE 2)

№	Name of indicators of the tariff estimate	Units of measurement	Approved for 2023	Fact for 6 months	Execution, (%)
I	The costs of producing goods and providing services, total, incl.	thousand tenge	24 019,47	14 039,54	58
1	Material costs, total, incl.	"-"	9 068,10	3 376,81	37
1.1.	materials	"-"	9 068,10	3 376,81	37
2	Labor costs, total, incl.:	"-"	8 939,00	6 521,11	73
2.1.	salary	"-"	7 871,97	5 205,42	66
2.2.	social tax	"-"	966,00	1 258,25	130
2.3.	Compulsory social health insurance	"-"	101,03	57,44	57
3	Depreciation of fixed and intangible assets	"-"	5 991,48	4 141,63	69
4	Other costs (medical services)	"-"	20,89		
II	Period expenses, total (taxes)	"-"	2 412,55	1 547,00	64
III	Total costs	"-"	26 432,02	15 586,54	64
IV	Profit	"-"	2 598,51	-644,13	-25
Y	Total income	"-"	29 030,53	14 942,41	51
YI	The volume of services provided	wagon-km	549 647	313 455	57
YII	Tariff	tenge/ wagon-km	47,67	47,67	100

IMPLEMENTATION OF THE INVESTMENT PROGRAM FOR THE SERVICES OF ACCESS ROADS BY THE RESULTS OF THE 1ST HALF OF 2023

Name of the project	Approved for 2023		Fact for 6 months		deviation		Causes
	volume, km	amount, thousand tenge	volume, km	amount, thousand tenge	volume, km	amount, thousand tenge	
Total for the services of JSC «NC «KTZh», including:	1,193	23 380	0	0	-1,193	-23 380	
Oskemen station access road No.53	0,207	4 119			-0,207	-4 118	Expected to be executed in the second half of 2023, according to the enhanced medium repair schedule
Semey station access road No.142	0,075	1 500			-0,075	-1 500	
Semey station access road No.44	0,167	3 255			-0,167	-3 255	
Semey station access road N146	0,135	2 645			-0,135	-2 645	
Shar station access road No18	0,237	4 565			-0,237	-4 565	
Ayagoz station access road No 129A	0,08	1 660			-0,08	-1 660	
Shieli station access road No 19	0,148	2 856			-0,148	-2 856	
Shieli station access road No 20	0,144	2 780			-0,144	-2 780	

ELECTRIC POWER TRANSMISSION SERVICES



ELECTRIC POWER TRANSMISSION SERVICES

The Company includes 12 branches of the backbone network that provide services for the transmission of electrical energy.

**The company has power grid facilities:
power lines:**

- 12 314.8 km,

installed capacity of TS, CTS - 1 164.6

(thousand kW).

In the first half of 2023, 661 consumers used electric power transmission services.

In total, switchgears, transformer substations (TS) and complete transformer substations (CTS) - 7,031 units. Of these, 2,449 switchgears and 4,582 TS and CTS.

ABOUT EXECUTION OF THE TARIFF ESTIMATE FOR ELECTRIC POWER TRANSMISSION SERVICES BY THE RESULTS OF THE 1ST HALF OF 2023

№	Name of indicators of the tariff estimate	Units of measurement	Approved for 2023	Fact for 6 months	Execution, (%)
I	The costs of producing goods and providing services, total, incl.	thousand tenge	2 476 826,79	1 816 024,00	73
1	Material costs, total, incl.	-/-	1 871 743,20	1 325 219,56	71
1.1	materials	-/-	21 825,70	10 847,30	50
1.2	FUEL	-//-	15 149,88	7 395,52	49
1.3	energy	-//-	1 834 767,62	1 309 976,75	71
2	Labor costs, total, incl.	-//-	565 712,33	459 770,56	81
2.1	salary	-//-	507 137,90	408 749,40	81
2.2	social tax	-//-	43 360,29	38 783,56	89
2.3	Compulsory social health insurance		15 214,14	12 237,60	80
3	Depreciation of fixed and intangible assets	-//-	37 392,00	29 690,17	79
4	Third party services, including:	-//-	1 979,26	1 343,71	68
4.1	utilities	-//-	1 671,79	1 280,94	77
4.2	communication services	-//-	307,47	62,77	20
II	Period expenses, total (taxes)	-//-	2 075,85	2 175,57	105
III	Total costs	-//-	2 478 902,64	1 818 199,58	73
IV	Profit	-//-		-589 913,95	
V	Total income	-//-	2 478 902,64	1 228 285,63	50
VI	The volume of services provided	thousand kWh	1 018 207,99	562 989,85	55
		%	10,11	10,11	
VII	Regulatory losses	thousand kWh	114 484,12	62 557,61	55
VIII	Tariff (excluding VAT)	tenge/kWh	2,18	2,18	100

IMPLEMENTATION OF THE INVESTMENT PROGRAM FOR ELECTRIC POWER TRANSMISSION SERVICES BY THE RESULTS OF THE 1ST HALF OF 2023

№	Name of the project	Units of measurement	Approved for 2023		Fact for 6 months		deviation
			volume	amount	volume	amount	amount
	Total		16	37 367	5	16 722	-20 645
1	Complete switchgear with installation(CSR)	set	2	8 530			-8 530
2	Transformer TM-400/10/0.4kV	piece	7	13 721			-13 721
3	Transformer TM-630/10/0.4kV	piece	1	2 944	1	4 987	2 043
4	Oil transformer TM-250/10/0.4kV	piece	5	7 321	4	11 735	4 414
5	Oil transformer TMZH-400/27,5/0.4kV	piece	1	4 851			-4 851

WORK WITH CONSUMERS OF SERVICES FOR THE 1ST HALF OF 2023

for access road services:

1. Operative (accelerated) work with service consumers was ensured on the principle of one window:
 - acceptance of the application;
 - issue of a signed contract;
 - registration of a statement of the supply and cleaning of wagons;
 - carrying out the calculation (taxation of services) and acceptance of payment for services.
2. For the prompt dispatch and acceptance of consumer goods, an electronic shipping document is drawn up in an automated control system for contractual and commercial work at all branches of the road..
3. Following the results of 6 months of 2023, 360 contracts were concluded with consumers of services.

for electric power transmission services:

1. To improve the quality of the provision of services for the transmission of electric power, in terms of increasing the reliability of power supply, the following works are constantly being carried out:
 - carrying out load measurements along 0.4 kV lines and ensuring uniform phase-by-phase distribution of the line load;
 - the use of switchgears with vacuum switches, modern protections and automation devices, which ensure an increase in the reliability of power supply by selectively disconnecting the damaged section of the line and automatically switching on the reserve or automatically reclosing a section of the line with unstable short-term damage to the line;
2. . Following the results of 6 months of 2023, 661 contracts were concluded with consumers of services.

CURRENT AND PERSPECTIVE CHALLENGES

for access road services:

- ✓ Ensuring traffic safety;
- ✓ Implementation of enhanced average repair of access roads in the amount of 1,193 km in the amount of 23,380 thousand tenge;
- ✓ Reduction of the total wear of access roads by 0.3%;
- ✓ Ensuring the current maintenance of access roads in accordance with the requirements of the Rules of Technical Operation;
- ✓ Provision of services to consumers in a timely and complete manner.

for electric power transmission services:

- Improving the reliability of the Company's distribution networks by replacing power transformers with a service life exceeding the standard service life);
- Modernization of the Company's power supply devices by replacing complete switchgear with oil switches with modern CSR-2-10 brand cells with vacuum switches;
- Ensuring unhindered access to the regulated service and continuing work on timely consideration of consumer applications and the issuance of appropriate technical conditions for connection to electric networks of power supply distances.

THANK YOU FOR ATTENTION